



C & A



INTRODUCTION



C & A Enterprises was founded in 2022, located in Hyderabad city, Telangana, India. We are manufacturing and supplying an excellent range of Industrial Storage systems and Material Handling Equipments.

C & A Enterprises is a Hyderabad-based firm having interests in outsourced manufacturing, distribution, and servicing of an excellent range of industrial storage systems and material handling equipments. These products are manufactured by a team of diligent experts using high-grade raw material from JSW, TATA, Essar, etc., procured from the trusted vendors of the industry. Available at industry-leading prices, these industrial storage systems and Material Handling Equipments are made as per the market demand to attain maximum level of client satisfaction.

C & A is one of the fastest-growing firms in its domain, with a mission to become the premier industrial storage systems and Material Handling Equipments in each of the product categories and service offerings by making available a breadth of quality products at affordable prices, minimal delivery time and honest after-sales support to its customers.

Products sold under the C & A brand are manufactured in partnership with reputed OEMs that follow stringent quality specifications and use branded core components as a standard. The products are designed and manufactured keeping in mind global industry standards. Most of the products sold are ISO 9001:2015 certified.





PRODUCTS

Industrial Storage Systems
Material Handling Equipment



Industrial Storage Systems

1. Heavy duty racks
2. Medium duty shelving racks
3. Drive-in pallet racking
4. Multi-tier racking system
5. Mezzanine floor system
6. Slotted angle storage racks
7. Cantilever racking
8. Mobile compactor storage system
9. Metal pallet

Material Handling Equipments

1. Hand Pallet Truck
 - Hydraulic Hand Pallet Truck
 - Battery Operated Pallet Truck
 - High Lift Pallet Truck
2. Stacker
 - Manual Stacker
 - Semi Electric Truck
 - Fully Electric Stacker
3. Order Picker
4. Goods Lift
5. Scissors Lift
 - Hydraulic Scissor Lift table
 - Scissors Lift
6. Dock Levelers





INDUSTRIAL STORAGE SYSTEMS

An Industrial Racking System is an industrial storage solution that allows you to stack material with multiple levels, which helps you manage and utilize the available space. Each production facility has its own set of requirements that increase space utilization without affecting your operations.

An industrial storage system made of durable metal, steel and other grades and material to ensure high strength, durability and lastingness. These are of great use for storage and industrial purposes and therefore, available in an array of sizes and shapes.

HEAVY DUTY PALLET RACKS



Heavy-duty racks are designed to store heavy-load items efficiently. Heavy-duty shelving, when assembled correctly, it is safe, versatile, and adjustable so that it can be reconfigured depending on your inventory and layout requirements. The working aisle measurement between each rack and the rack height depends upon the characteristics of the fork-lift trucks or lifting devices, pallet size and the height of the warehouse itself.

Holding stock is an extremely complicated job, especially for bulky tools such as auto parts, paper products, liquids and tires. We offer an extensive range of pallet racking system that helps in keeping the inventory well organized to maximize the storage space.

C and A Heavy-duty Racking systems can be assembled in different configurations and dimensions based on the requirements of the business. We custom design and build storage systems suitable to your unique requirements with a wide range of uprights, beam profiles, shelving and accessories.

- Better space utilization.
- 100% accessibility to individual pallets.
- Optimum utilization of storage space
- Easy to dismantle, relocate or reconfigure
- Adjustable shelving with 50 mm pitch

2 MEDIUM DUTY RACKS

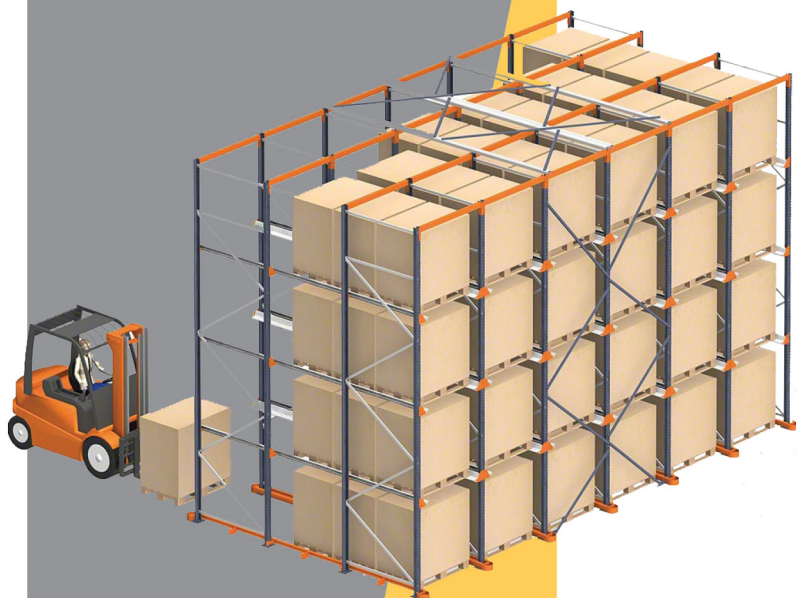
Medium Duty Storage Rack is the optimal system designed to store light to medium size products, which makes it adaptable to different units and facilities. Designed to meet the varied needs of large-scale industries and convenient to handle the work orderly manner. C & A Enterprises is one of the paramount Medium Duty Storage Rack Manufacturers. Their high bearing capacity makes Medium Duty Pallet Rack safe, reliable and prevents deformation as well. Being one of the trusted Medium Duty Storage Rack Manufacturers, We use the finest quality material to design and deliver a plethora of options to our customers.

C and A is generally made from standard modular components that allow installations of different heights, vertical shelf spacing and shelf depths. The typical standard span depth is 1 Ft, 1.5 Ft, 2 Ft for Medium Duty & 2 Ft to 4 Ft for Heavy duty. But long span shelving is also available that facilitates the holding of longer items of stock. This is suitable for light and medium-duty work. Mostly used as shelving, adjustable units can be assembled rapidly and adapted to change and expansion. Each shelf can be adjusted independently; used efficiently, this allows the storage space to be used to the full. Most adjustable shelving can be altered with basic tools.

- Medium Duty Shelving Rack is suitable for manufacturing units, warehouses and industrial facilities to keep products categorized on a different basis.
- Helps to Categorize Products
- High Load Bearing Capacity



DRIVE-IN PALLET RACKING



Drive-In & Drive-Through Racks offer the ability to store a large number of similar loads in a smaller area. Selectivity is sacrificed, but storage density is outstanding. Drive-in Racking can store up to 75% more pallets in the same space than selective racking depending on your application.

In this system, the material handling equipment is driven into the lanes inside the racks to deposit and retrieve pallets. The pallets are supported on specially designed cantilever support arms.

C & A drive-in Pallet Racking creates efficiencies by reducing aisle loading and unloading times, yet allowing greater access compared to block-stacking. Positioning pallets on front-to-back rails allows rows to be stacked next to each other safely and efficiently; crucial for items regarded as fragile or unstable.

The First-in, Last-out (FILO) principle means individual pallets can be accessed one by one from the front of the rack.

Features

- More storage per cubic meter than any other storage system
- Limited stock rotation – ideal for seasonal goods and chilled storage
- Accessible by the FILO principle
- Smooth pallet rails – for safe, snag-free load-bearing
- Brightly coloured pallets help drivers position loads quickly and accurately
- Highly cost-effective solution
- Extremely high storage density of up to 85%.
- Best suited for batch storage.



MULTI-TIER RACKING SYSTEM



Ideal System for Manufacturing Operations and Spare Parts Storage

The Multi-tier Racking designed for warehouses with limited floor areas but available height, are manual storage solutions that maximize warehouse space. They offer an optimum use of height with the creation of different levels of manual loading aisles at different heights accessible by stairs. The Multi-tier racking system is a solution in height based on the long-span shelving system. It is ideal for manual storage where available space is limited.

Multi-tier racking is the construction of shelving at two or more levels using the same components used for heavy-duty racking. Multi-tier racking is suitable for medium to large-size warehouses. It is ideal for the storage and distribution of large small parts SKUs (Stock keeping units) with medium turnover.

Multi-tier racking provides storage space at multiple levels, thus maximizing the utilization of vertical space available in a warehouse, making it easier for businesses to store more of their inventory, thereby increasing the capacity of the warehouse as a whole.

C & A offers a wide range of decking options to fulfill your exact requirements. Various accessories like divide panels, partitions, side plates, can be used for the division of storage areas and levels for stacking multiple products

Each level of the multi-tier storage can be accessed by staircases, main aisles, and cross aisles. This system allows reasonable access to all units stored and is adaptable to different load and storage units. With an efficient and versatile design and a broad range of optional components and accessories, our shelving systems can be easily adapted to your specific storage requirements.

Best Suited for

- Light to medium loads with manual operations.
- Manufacturing operations and spare parts storage.
- Archival storage of documentation boxes

Features

- Efficient storage solution for a large number of small parts with fractioned turnover.
- Highly versatile and robust storage system.
- Optimum utilization of warehouse vertical space.
- Compact storage with manual handling.
- Direct and safe access to each load level and stored items.
- Adjustable/ Flexible configuration to adapt to the changing storage requirement.
- Flexible decking options like steel shelves, mesh decks, perforated panels and MDF decking to suit your needs



MEZZANINE FLOOR SYSTEM

Mezzanine Floors can double and even triple surface area, increasing the usable surface in height by one or two levels inside a warehouse.

They are independent structures, easy to assemble and adaptable to any space where the flooring can be made of different materials such as wood or metal. Several accessories are available including handrails, stairs, unloading points, etc.

unloading points, etc.

Modular Mezzanine Floors are fabricated, supplied and installed as per the client's demands. These floors can be made on top of heavy-duty pallet racks, or just with heavy duty pillars.

Our range can be effortlessly relocated, enlarged, or dismantled with the property of high load-bearing overhead levels.

The range comes with heavy-duty columns which provide stiff hold, further helping in the operation of the lower level.

These floors are easily installed in the office, storage or manufacturing areas at lesser costs, and can completely utilize the existing overhead space and gain valuable work. It is made with High-quality anti-corrosive materials.

Advantages of the Mezzanine Floors:

- Increased surface area of warehouses and stores
- Great variety of floor sizes and types
- Quick and simple assembly
- Economical compared to concrete construction
- Highly portable
- Available with either metal or wooden flooring
- Non-permanent structure

6 SLOTTED ANGLE STORAGE RACKS

Slotted angle racks have been designed to meet all storage needs in industry, workshops, warehouses, shops, etc., the loading capacity varies from light to medium duty. It would be extended in width and height, it requires no special tools, making the slotted angle system ideal for manual warehousing.

Slotted Angle Racks, or Light Duty Racking, are ideal for a variety of applications including offices, Tool rooms, retail environments and storage areas. It's a cost-effective, light-duty bolted system, ideal for smaller or bulkier but lighter applications. It is available at a fraction of the cost of Pallet racking.

Shelves can be easily adjustable as per the height required of each compartment. Shelves can be customized in a number of standard sizes and heights.

These racks are available in a plethora of sizes, finishes, and designs to meet the demands of different clients. Our range of slotted angle racks offers a space for storing a number of items in an organized manner.

Features

- High tensile strength
- Smooth finishing
- Corrosion resistance
- Loading capability: 80-150kg/layer
- Material: High-grade cold-rolled steel
- 3,4,5,6 layers are available, and the layer height could be adjustable for free.
- Different dimensions, weight capabilities are available for us
- widely used in electrical, medicine, supermarket
- The edges are not sharp, avoiding injuries.
- Easy access to contents/materials from all sides.
- It is economical storage for any kind of hand-loaded materials.
- Starter and add-on units combine to form economical rows of shelving.
- The double folded corners which are clinched provide high rigidity and resistance against impact loads.



CANTILEVER RACKING

Best Suited for storing lengthy Pipes, tubes, aluminium profiles, flake board, metal/steel sheets, etc. Cantilever racking system allows for a lot of flexibility in design and usage. It is available in both single-sided and double-sided system configurations, increasing the capacity of available storage space while eliminating intermediate aisles.

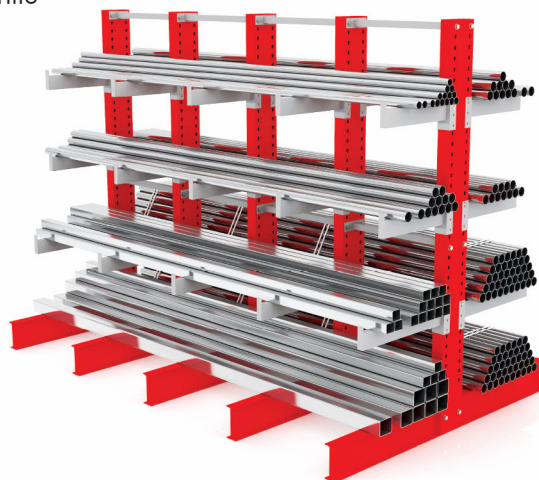
The system basically consists of columns with a vertical beam and one or two horizontal beams at the base to provide stability. A series of arms are attached on which the load is placed.

Loads may be handled manually when they are lightweight, or by using lift-trucks or other appropriate lifting systems when heavy items are involved.

For loads varying from 50 to 2500 kg per cantilever arm and for most types of long goods, an optimized storage system can be provided.

Advantage:

- Easier to use
- More compact
- More flexible
- More economical



8 MOBILE COMPACTOR STORAGE SYSTEMS



Application:

Files Storage, Records Storage, Spare parts at stores Stationeries-Banks, Finance & Education sectors

- Economic storage.
- Higher floor surface utilization.
- Increased storage capacity.
- Increase storage capacity by up to 180% over static solutions.
- Direct access to all items.
- Effortless manual operation with push handles or cranks.

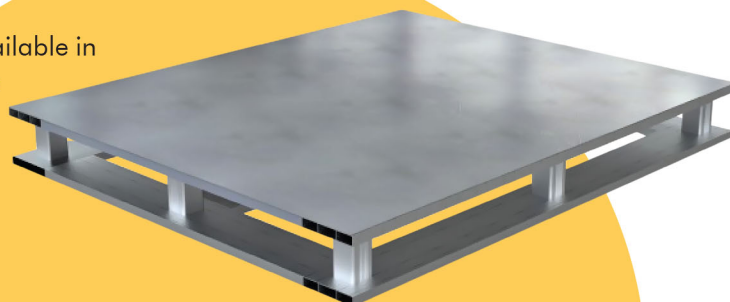
We manufacture and supply high-quality steel pallets that are available in different sizes, forms, and construction designs to meet the needs and requirements of our client base. These steel pallets are termed as the best available in the markets because of their features like and size available as per customer's requirements, Sturdy and heavy duty

Mobile compactor storage systems are mounted onto light or heavy-duty base units which can be moved in a parallel direction to each other. The system runs on two rails provided for the whole length of the unit. The system requires only one aisle to provide access to all items in stock. This type of system increases the storage capacity and reduces the floor space occupancy.

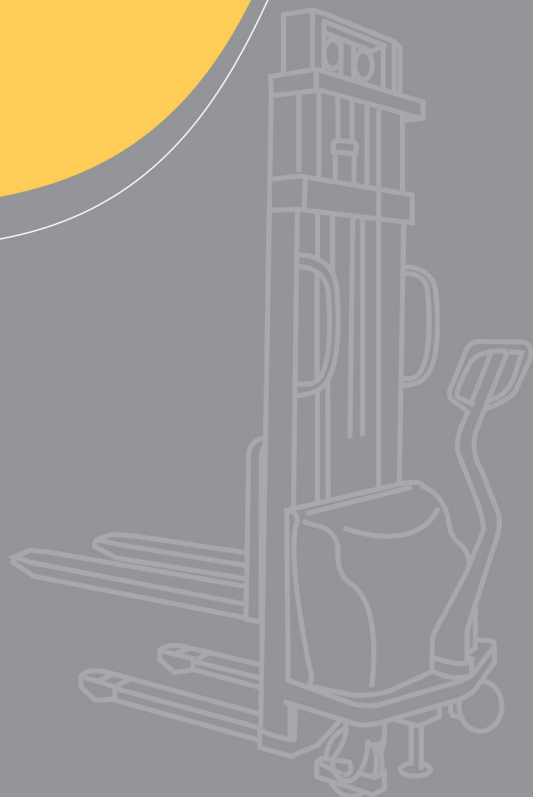
Mobile Compactor Systems are designed as per the floor space available and for storage and movement. C and A Mobile Compactor Systems are very compact and provide smooth mobility and exclusive locking systems for storage security.

Useful for Pharmaceuticals & Hospitals, Libraries & Educational Institutes, Offices, Warehousing.

METAL PALLET



MATERIAL HANDLING EQUIPMENTS



HAND PALLET TRUCK (MS & SS)

A Pallet

Truck, also known as a "pallet jack", "hydraulic pallet truck", is a basic form of forklift often used and best suited to a warehouse environment, for the moving of pallets and palletized loads from one place to another within a stipulated area – Horizontal movement.

Pallet trucks deliver one of the highest comforts in improvising the warehouse equipment category. It remains the first choice of equipment for warehouse, storage units, packaging, and home shifting industry. A hand pallet truck does not require any electrical power. A hand pallet truck can be operated manually. Pallet Truck is the perfect choice whenever you need to transport large volumes of goods or heavy loads quickly and efficiently over short distances



MS HAND PALLET TRUCK



Capacity: 2500, 3000, 5000kgs
Fork width: 520, 550, 685mm
Fork length: 600 to 3000mm

SS HAND PALLET TRUCK



Capacity: 3000, 5000kgs
Fork width: 550, 685mm
Fork length: 1150mm

BATTERY OPERATED ELECTRIC PALLET TRUCK



An electric pallet truck, also known as a powered pallet truck or electric pallet truck a very good alternative to a hand pallet truck for more efficient, smooth and cost-saving operations. It is a motorized tool used for lifting and moving pallets. It is most suitable in warehouses and manufacturing units for moving goods within the confines of the warehouse. Depending on the design, some powered pallet trucks have a platform that let users stand while moving pallets.

STACKER

A Pallet Truck, also known as a “pallet jack”, “hydraulic pallet truck”, is a basic form of forklift often used and best suited to a warehouse environment, for the moving of pallets and palletized loads from one place to another within a stipulated area – Horizontal movement.

Pallet trucks deliver one of the highest comforts in improvising the warehouse equipment category. It remains the first choice of equipment for warehouse, storage units, packaging, and home shifting industry. A hand pallet truck does not require any electrical power. A hand pallet truck can be operated manually. Pallet Truck is the perfect choice whenever you need to transport large volumes of goods or heavy loads quickly and efficiently over short distances

MANUAL STACKER



We offer a premium range of Manual Stacker from our own source from South India to our clients. These manual stackers are used for lifting and transporting palletized loads. Our range comes along with a lift which can raise the goods to a specific height thus making the transport process extremely convenient. Our manual stackers have an ergonomically designed steering handle that enables easy operating from all angles. The light and compact construction of the manual stacker reduces pulling power and helps in minimizing operator efforts.

Options:

- Load platform
- PU wheels
- Nylon wheels

SEMI ELECTRIC STACKER



With this electric stacker - you enjoy the benefit of vertical movement of the stacker with easy-to-use controls right in front of you. More power - more productivity, Semi-Electric Pallet Stacker offers horizontal transportation and vertical stacking.

FULLY ELECTRIC STACKER



An electric stacker, also known as a walkie stacker, is a power-propelled device for lifting and loading pallets. Primarily a stacker is used to lift, move and stack pallets on a shelf at a high level. This type of device is mostly found in warehouses.

Stackers are an alternative to traditional pallet trucks as they can lift as well as move, and they are a better choice than forklifts as they are less cumbersome and easier to manoeuvre.

SEMI ELECTRIC ORDER PICKER



Semi Electric Vertical Order Picker we provide the best-quality semi-electric vertical order picker that promises prime productivity. With a load-bearing capacity of 500 kgs, it is one of the best machines in operation. The lifting height can be adjusted as needed from 3500 to 4000 mm. Platform size of 600x750 mm provides it with unrivalled operability. Sturdy rear wheels ensure easy passage in all terrains. The provision of a long-lasting battery and charger guarantees continuous operation in all conditions.

4 SCISSORS LIFT TABLE



Mobile hydraulic scissor lifts are typically small, lightweight units that can push goods or heavy objects around a factory or workshop.

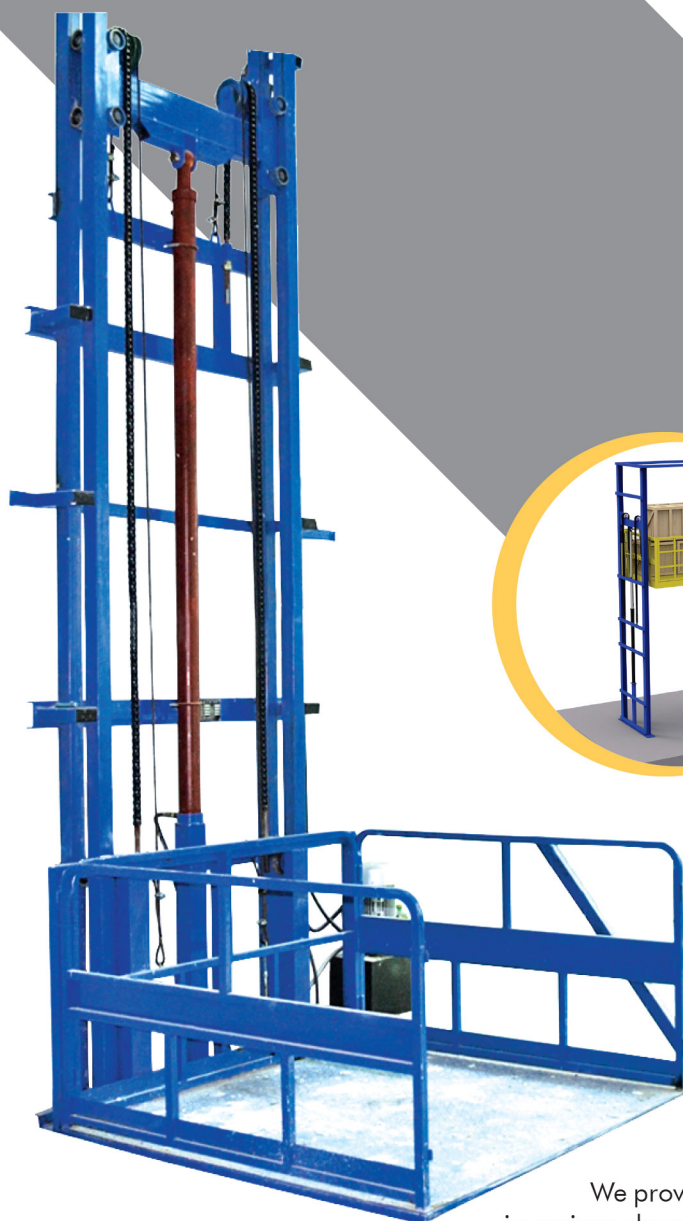
A lift table is a device that employs a scissors mechanism to raise or lower goods and/or persons. Typically lift tables are used to raise large, heavy loads through relatively small distances. Common applications include pallet handling, vehicle loading and work positioning

SCISSORS LIFT

Hydraulic scissor lifts are a cost-effective and durable machine that uses an electric motor or other power sources to pressurize hydraulics to lift a payload. A scissor lift table is a mechanical lifting platform that can be raised and lowered to any desired height. Lift tables make your work processes more efficient by removing the need for physical lifting, optimizing ergonomics, leveling vertical distances and making your workspaces more flexible.



GOODS LIFT



We offer a wide range of goods lifts and Hydraulic Goods Lifts, specially designed for lifting the material from one floor to another at different levels.

We provide a variety of hydraulic goods lifts, goods lifts, Material lifts in various shapes, sizes and capacities as per our client's requirements and offer Maintenance and Installation services of hydraulic goods lifts and elevators. These Hydraulic Goods Lifts are offered with various technical specifications in order to attain customers' trust and satisfaction. They are also spacious and can be manufactured according to the specifications of our clients.

Goods Lift is used in industrial estates. These are heavy-duty, slow-moving robust vertical carriers with less maintenance cost. Our Goods Lift is subject to strict manufacturing and installation that are meant to protect consumers and offers maximum safety. As long as your elevator is properly installed, you can rest assured that it will operate smoothly. It consists of a long list of safety features.

Goods Lift's Features

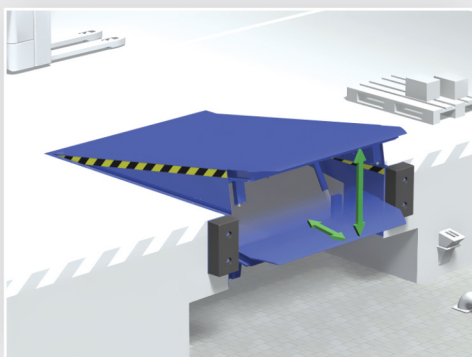
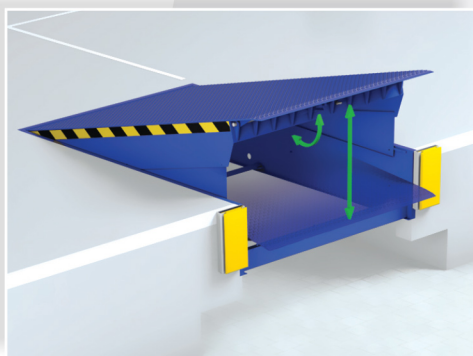
- We offer a wide range of Freight Elevators for various kinds of applications with a capacity ranging from 500 kg to 4000 kg.
- We recommend and offer different freight elevator styles based on your desired application and specific requirements.
- Any size of pallets can be easily fitted into our designed cabin sizes.
- Even automated guided vehicles (AGV) are also added to lift cabins.
- No need for a deep pit and headroom
- Does not require conventional lift well/room
- Can be totally customized for your needs/space available
- Very economical compared to conventional lifts

DOCK LEVELER



Dock levelers and lifts are generally permanent fixtures at each door of a dock. Dock levelers bridge the gap and height difference between the dock and the trailer. Dock plates are simply metal ramps, bridging the gaps between dock and truck.

Hydraulic dock levelers are operated with the push of a button on a control panel, no longer requiring the operator to manually use a pull-chain. Instead, the operator uses a button to raise and lower the leveler and extend or store the lip.





C & A
Enterprises



Flat No – 207, 2nd Floor, VNR Towers,
Matrubhumi Infra, Mahadevpur Colony,
Gajularamaram, Hyderabad,
Telangana – 500055



+91 99666 89989



info@caenterprises.in
caenterprises.in